



Artist's conceptual illustration. Subject to change.



Berkeley

3 BR | 2.5 BA | 2,064 SQ FT

PURCHASED



Which area in this sophisticated home plan will become your sweet spot? With a welcoming covered front porch, a spacious screened sleeping porch, and a large Owner's Suite opening to its own private covered porch, you'll have many 'favorite places' to enjoy. On the main level, an inviting kitchen and breakfast area opens to a spacious living room, where two sets of grand French doors open out to the screened rear porch. This porch is as lovely as it sounds and will surely be home to many a morning coffee, afternoon nap or get together with friends.

Price is subject to change without notice

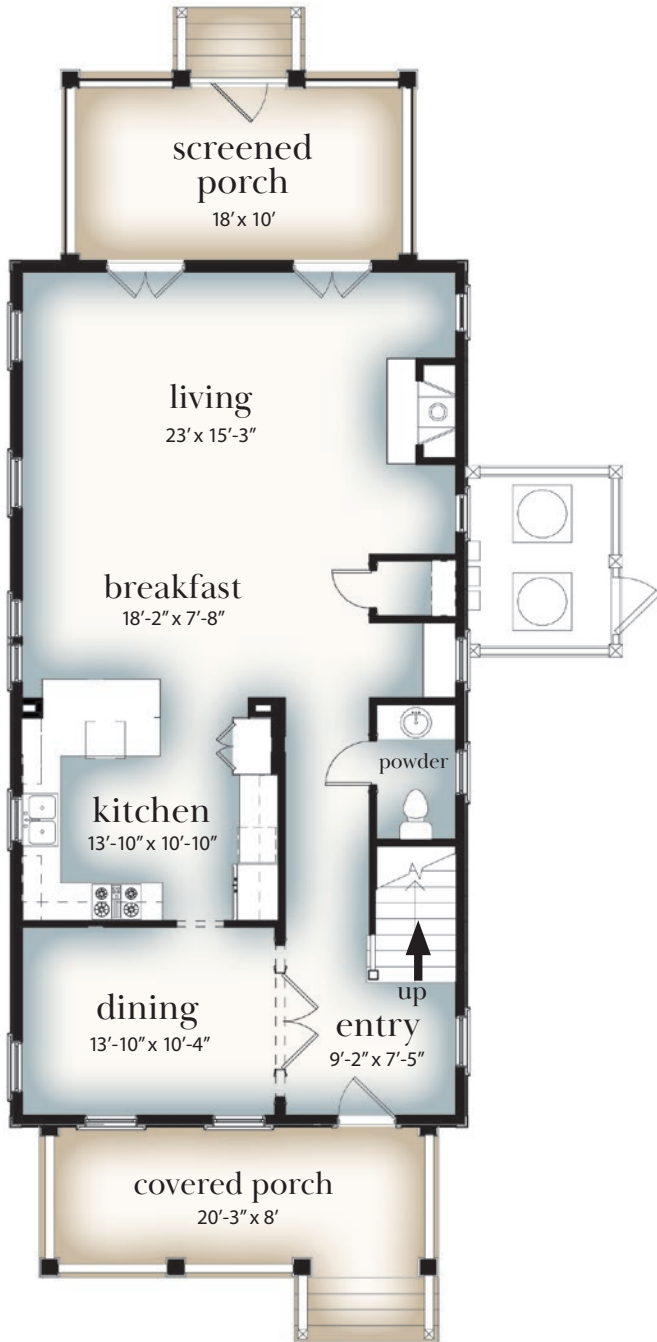
For more information or a personal property tour, please contact us at info@BayCreekLife.com or 844.620.2900

BayCreekLife.com

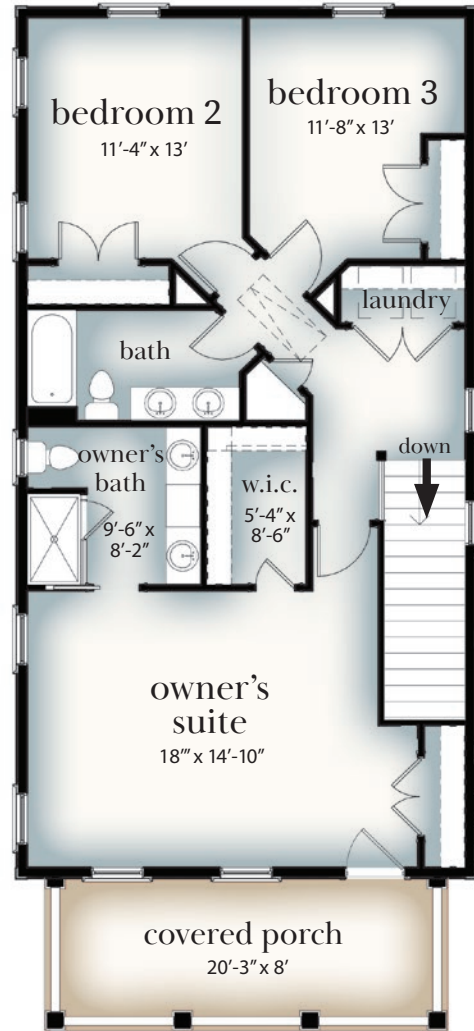


 **BAY CREEK**
Cape Charles, Virginia

Berkeley Floorplan



First Floor



Second Floor

Artist's conceptual illustration. Subject to change.

For more information or a personal property tour, please contact us at info@BayCreekLife.com or 844.620.2900

BayCreekLife.com



10/21/21

BAY CREEK
Cape Charles, Virginia