



Charles

4 BR | 3.5 BA | 2,616 SQ FT

PURCHASED



Authentically Eastern Shore, this floorplan was designed to make the most of life along the Bay. Generous covered porches in the front and back of the home will become an extension of your living area in the mild, coastal Virginia climate. Inside, the fantastic open floor plan is ideal for gathering, preparing and sharing a meal with family and friends after a memorable day on the beach or exploring Cape Charles. The main level Owner's Suite opens to the rear porch and provides a luxurious master bath and walk-in closet. Upstairs, three well-sized bedrooms offer views in all directions. The Charles is truly an ideal layout for your family's new 'homeplace'. Enjoy making it uniquely yours with fine finishes and luxurious details.

Price is subject to change without notice

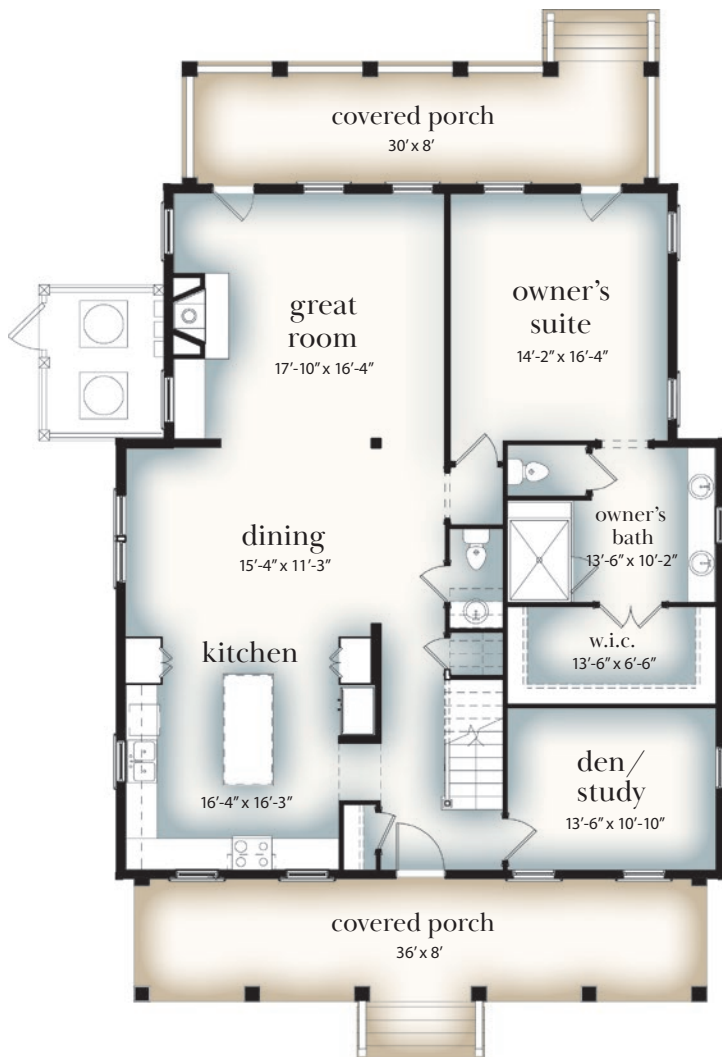
For more information or a personal property tour, please contact us at info@BayCreekLife.com or 844.620.2900

BayCreekLife.com

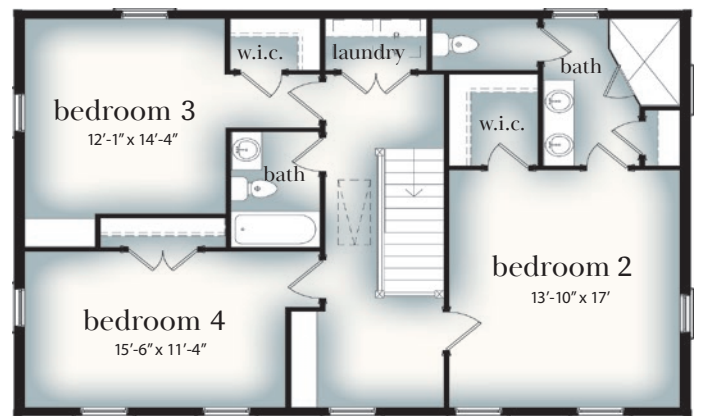


 **BAY CREEK**
Cape Charles, Virginia

Charles Floorplan



First Floor



Second Floor

Artist's conceptual illustration. Subject to change.

For more information or a personal property tour, please contact us at info@BayCreekLife.com or 844.620.2900

BayCreekLife.com



10/21/21

 **BAY CREEK**
Cape Charles, Virginia