



*Artist's conceptual illustration. Subject to change.*



## *Tidewater*

4 BR | 3.5 BA | 2,631 SQ FT

**PURCHASED**



Living in a place like Bay Creek, porches are an absolute must. This elegant home offers covered front porches on both the main and upper levels. Well-proportioned open living spaces on the main level boast refined details and quality finishes, and are perfect for family gatherings or a quiet night sitting by the fireplace. The Owner's Suite on the main level has everything you'd expect in a luxury home, opening onto a large sleeping porch. Upstairs you'll find three bedrooms, each with their own full bath, as well as a shared loft area. Open the French doors from the upstairs bedrooms onto the ample covered porch and enjoy fresh Bay breezes in any season.

*Price is subject to change without notice*

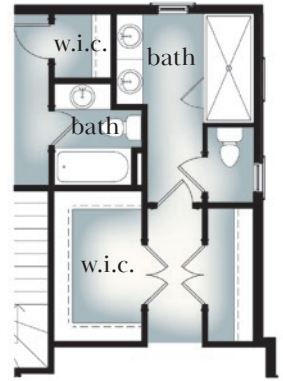
For more information or a personal property tour, please contact us at [info@BayCreekLife.com](mailto:info@BayCreekLife.com) or 844.620.2900

[BayCreekLife.com](http://BayCreekLife.com)



**BAY CREEK**  
Cape Charles, Virginia

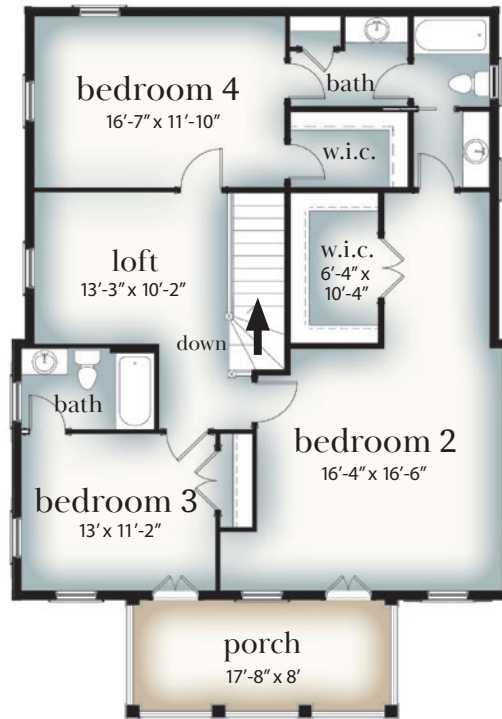
# Tidewater Floorplan



Optional Separate Baths



First Floor



Second Floor

Artist's conceptual illustration. Subject to change.

For more information or a personal property tour, please contact us at [info@BayCreekLife.com](mailto:info@BayCreekLife.com) or 844.620.2900

[BayCreekLife.com](http://BayCreekLife.com)



10/21/21

**BAY CREEK**  
Cape Charles, Virginia