



Artist's conceptual illustration. Subject to change.



Chesapeake

4 BR | 3.5 BA | 2,899 SQ FT

\$834,900



Named for the vast, sparkling bay that defines our region, The Chesapeake perfectly embodies Bay Creek living. A large front porch and intimate screened rear porch are an extension of the home, making outdoor living a pleasure. Elegant details and finishes enhance a welcoming great room and adjacent den, perfect for a home office or library. The large galley kitchen features KitchenAid® appliances, stone counters and Timberlake 42" cabinetry, all highlighted around a large center island. Three bedrooms, all with ensuite bathrooms, and a shared loft area upstairs provide ample spaces to share your incredible Eastern Shore lifestyle with those who matter most.

Price is subject to change without notice

For more information or a personal property tour, please contact us at info@BayCreekLife.com or 844.620.2900

BayCreekLife.com

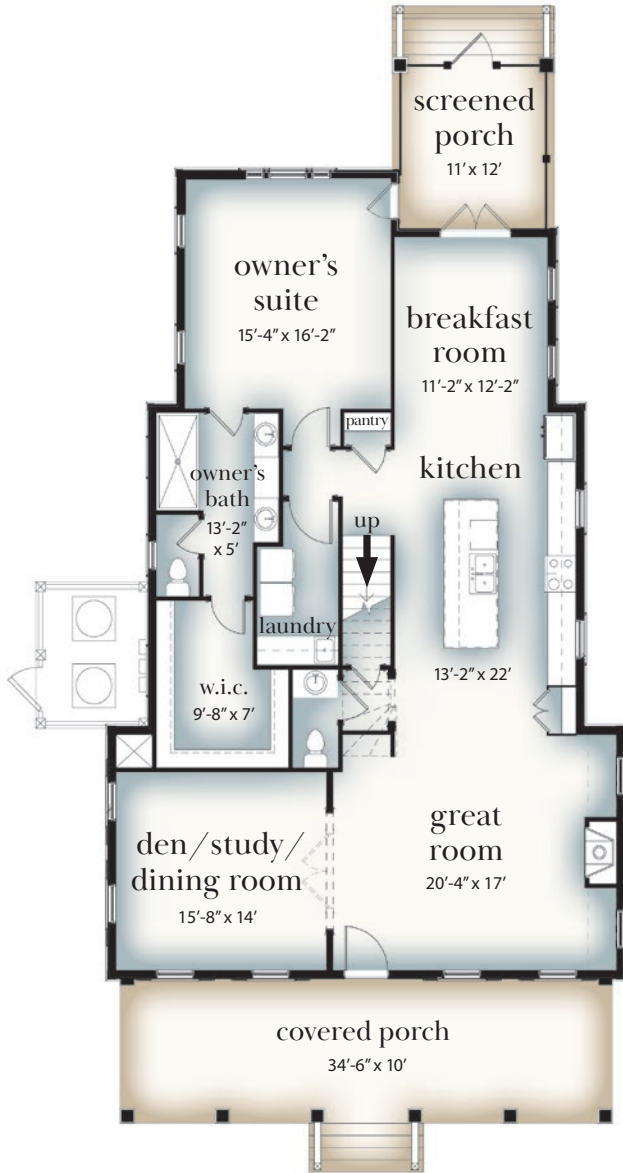


 **BAY CREEK**
Cape Charles, Virginia

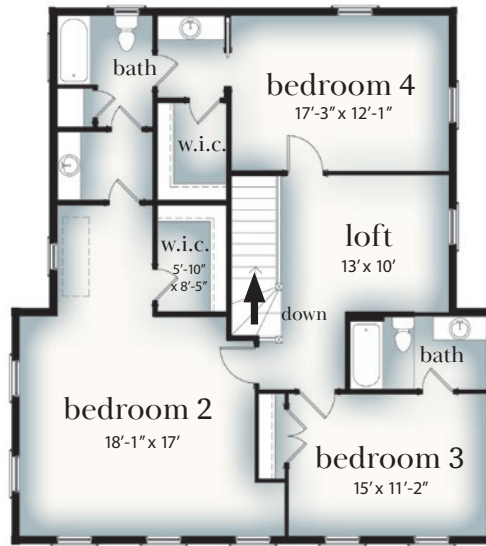
Chesapeake Floorplan



Optional Separate Baths



First Floor



Second Floor

Artist's conceptual illustration. Subject to change.

For more information or a personal property tour, please contact us at info@BayCreekLife.com or 844.620.2900

BayCreekLife.com



10/21/21

BAY CREEK
Cape Charles, Virginia