

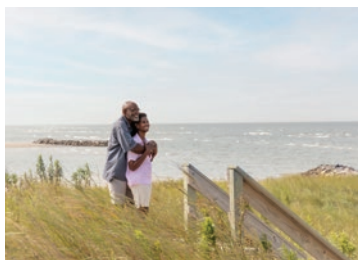


Artist's conceptual illustration. Subject to change.

Albemarle

Elevation A

3 BR | 2.5 BA | 2,423 SQ FT
PURCHASED



Elegance comes in many forms. This unique floorplan offers the exceptional open living you seek with distinct touches you'll love. You'll feel the charm of this home from the moment you step onto the wrap around covered front porch. Inside, an intimate study awaits your personal library or home office. The welcoming morning room opens up to a vast gourmet kitchen and great room. A large screened porch is nestled alongside, and just beyond is the main level Owner's Suite, which provides a luxurious respite after a day out on the water. Guests and family will enjoy the comfortable upstairs quarters, with two bedrooms and an inviting loft area.

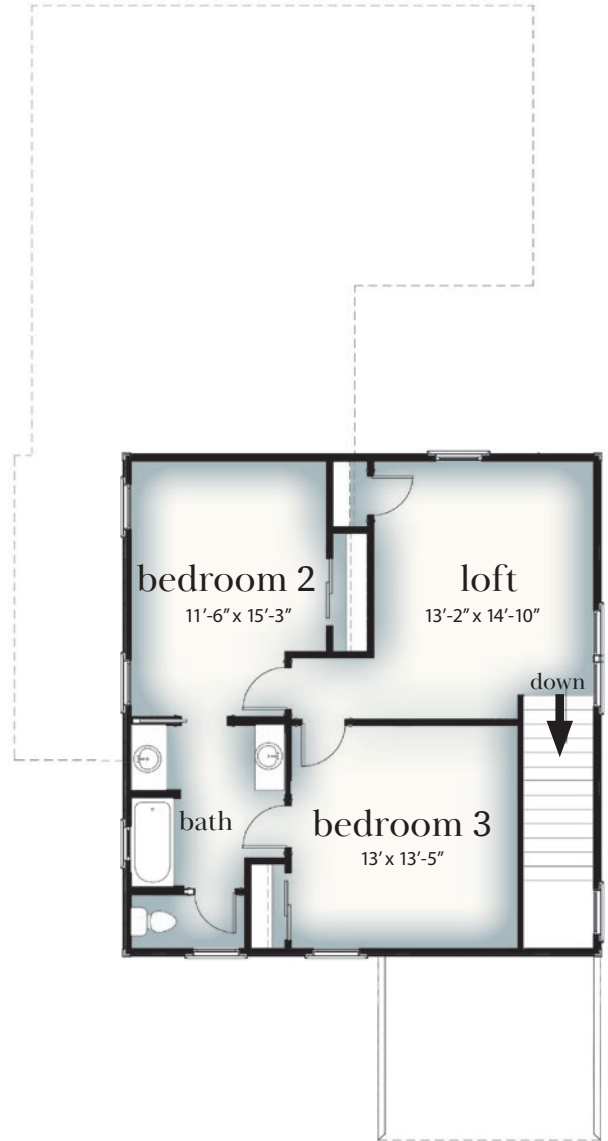
Price is subject to change without notice

Albemarle Floor Plan

Elevation A



First Floor



Second Floor

Artist's conceptual illustration. Subject to change.

For more information or a personal property tour, please contact us at info@BayCreekLife.com or 844.620.2900

BayCreekLife.com



03/04/22

 **BAY CREEK**
Cape Charles, Virginia