

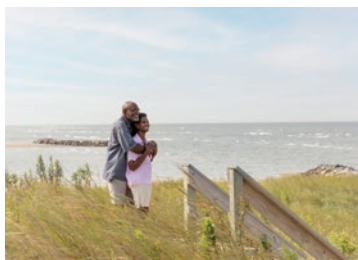


Artist's conceptual illustration. Subject to change.

Hampton

Elevation A

4 BR | 3.5 BA | 2,387 SQ FT
\$794,900

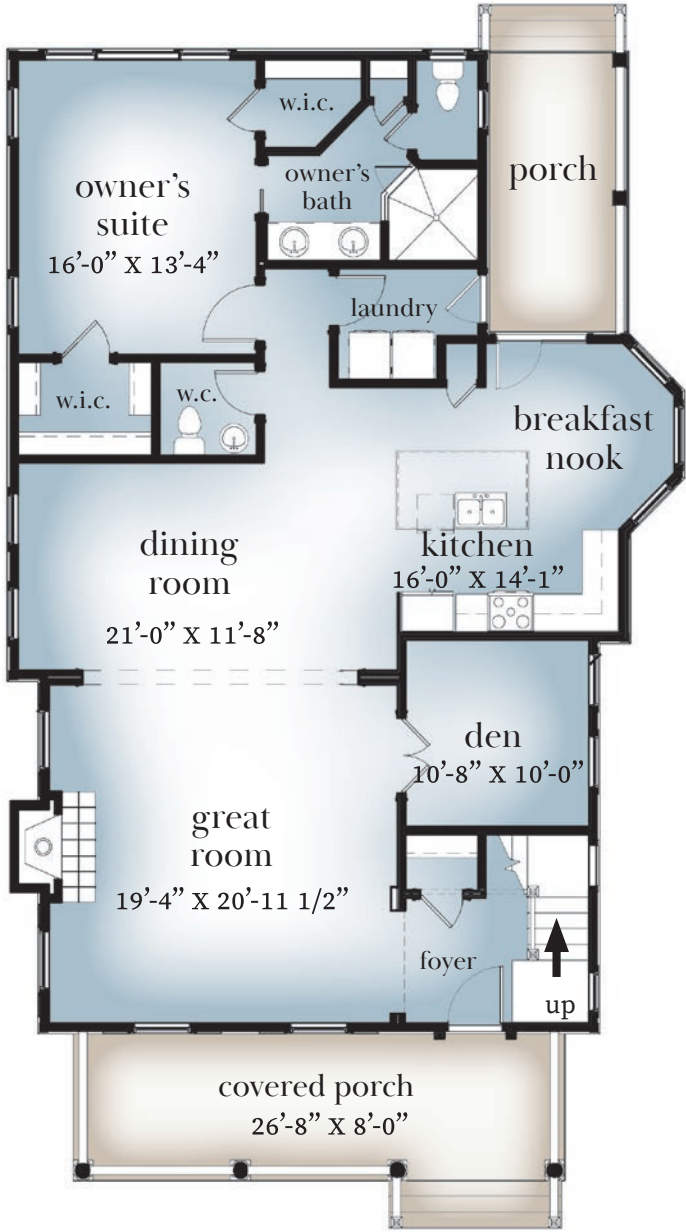


There are many ways to blend Bay living's essential elements—covered porches, large windows, gathering spaces—and The Hampton does so in a way that is simply ideal. Life in The Hampton means large and comfortable dining and living spaces that open up to the heart of the home: a bright, spacious kitchen. Tucked away at the back of the home, the Owner's Suite is wonderfully private yet steps from everything. Three bedrooms upstairs provide lovely accommodations for family and guests. A broad covered porch upstairs awaits nights of stargazing and bright mornings looking out on the gorgeous vistas that are Bay Creek.

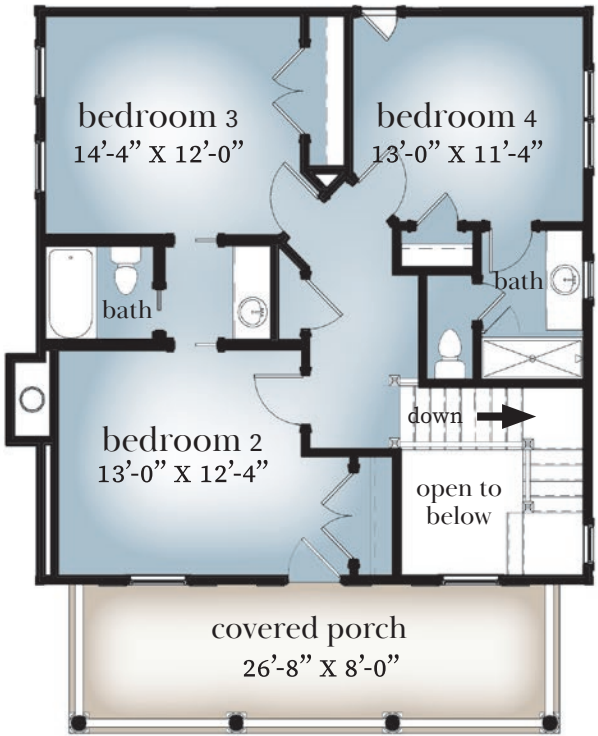
Price is subject to change without notice

Hampton Floor Plan

Elevation A



First Floor



Second Floor

Artist's conceptual illustration. Subject to change.

For more information or a personal property tour, please contact us at info@BayCreekLife.com or 844.620.2900

BayCreekLife.com



05/02/22

