

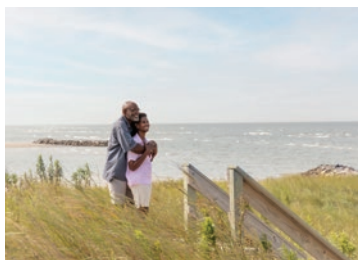


Artist's conceptual illustration. Subject to change.

Hampton

Elevation B

4 BR | 3.5 BA | 2,387 SQ FT
\$779,900



There are many ways to blend Bay living's essential elements—covered porches, large windows, gathering spaces—and The Hampton does so in a way that is simply ideal. Life in The Hampton means large and comfortable dining and living spaces that open up to the heart of the home: a bright, spacious kitchen. Tucked away at the back of the home, the Owner's Suite is wonderfully private yet steps from everything. Three bedrooms upstairs provide lovely accommodations for family and guests.

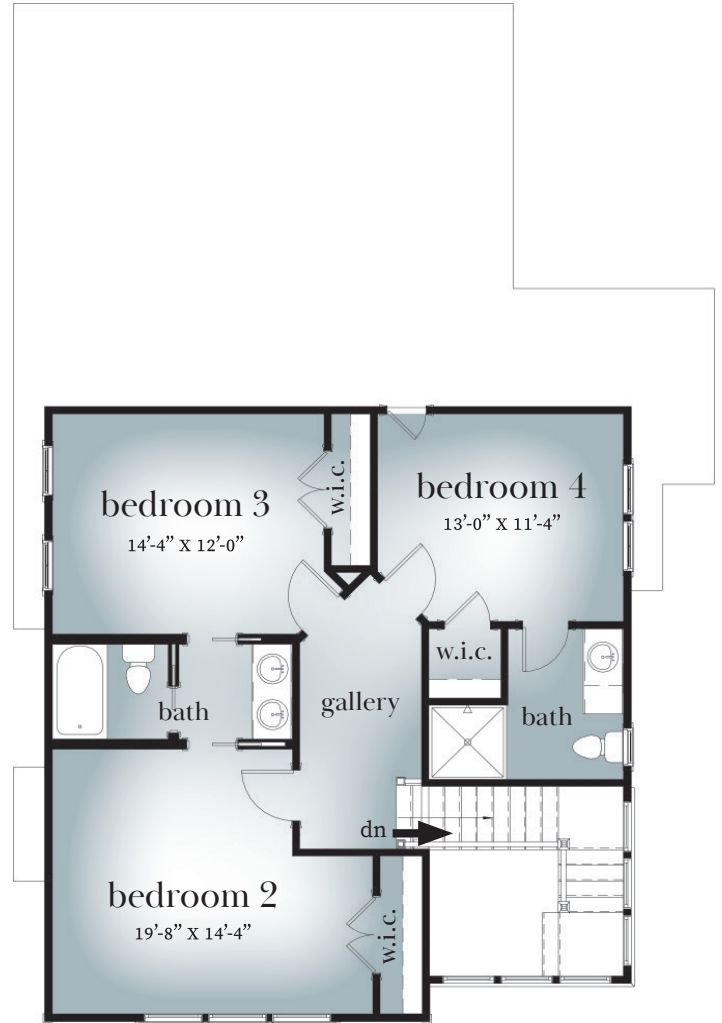
Price is subject to change without notice

Hampton Floor Plan

Elevation B



First Floor



Second Floor

Artist's conceptual illustration. Subject to change.

For more information or a personal property tour, please contact us at info@BayCreekLife.com or 844.620.2900

BayCreekLife.com



03/04/22

BAY CREEK
Cape Charles, Virginia

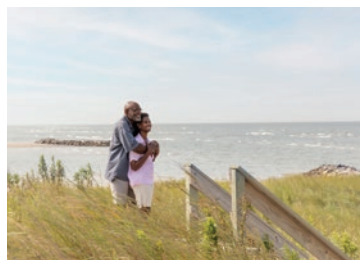


Artist's conceptual illustration. Subject to change.

Mason

Elevation A

4 BR | 3.5 BA | 2,668 SQ FT
\$849,900



A quintessential Southern coastal home with a covered front porch that extends the indoor living areas outside, where the sights and sounds of the nearby Chesapeake Bay await. Inside, enjoy gathering with family and friends in the open living and dining area. The inviting breakfast room, adjoining a sleek gourmet kitchen, is the perfect place to grab a light breakfast before heading out for a morning walk through the nearby Nature Preserve. The first-level Owner's Suite is perfectly proportioned—a large walk-in closet and private bath along with a door leading out to a sleeping porch. Upstairs, three bedrooms and a shared loft area make this plan an ideal 'home base' to enjoy all life has to offer on the Eastern Shore.

Price is subject to change without notice