

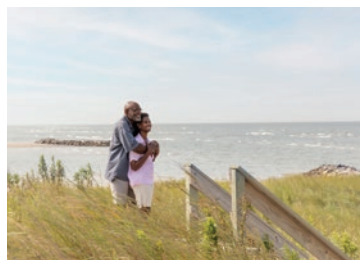


Artist's conceptual illustration. Subject to change.

Mason

Elevation A

4 BR | 3.5 BA | 2,668 SQ FT
\$859,900

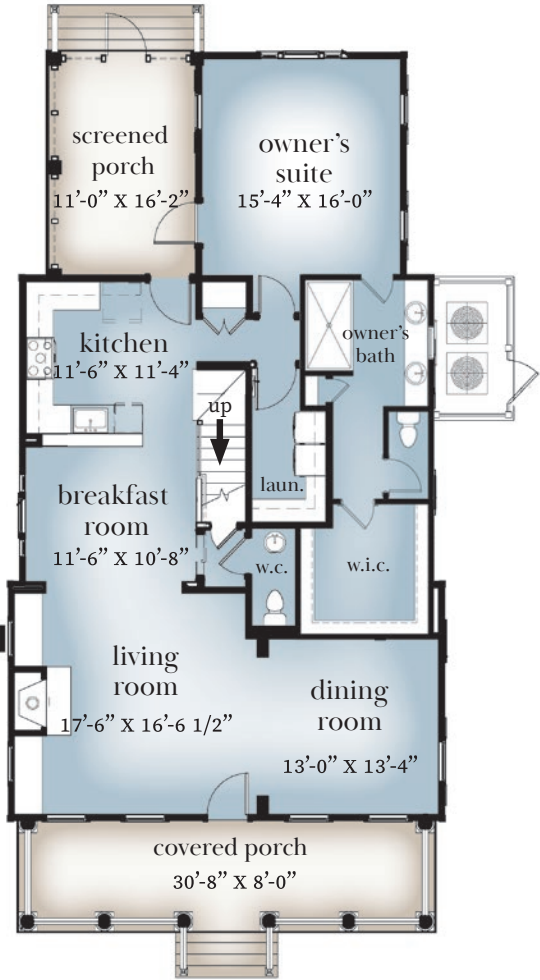


A quintessential Southern coastal home with a covered front porch that extends the indoor living areas outside, where the sights and sounds of the nearby Chesapeake Bay await. Inside, enjoy gathering with family and friends in the open living and dining area. The inviting breakfast room, adjoining a sleek gourmet kitchen, is the perfect place to grab a light breakfast before heading out for a morning walk through the nearby Nature Preserve. The first-level Owner's Suite is perfectly proportioned—a large walk-in closet and private bath along with a door leading out to a sleeping porch. Upstairs, three bedrooms and a shared loft area make this plan an ideal 'home base' to enjoy all life has to offer on the Eastern Shore.

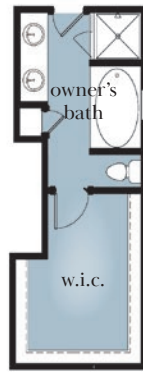
Price is subject to change without notice

Mason Floor Plan

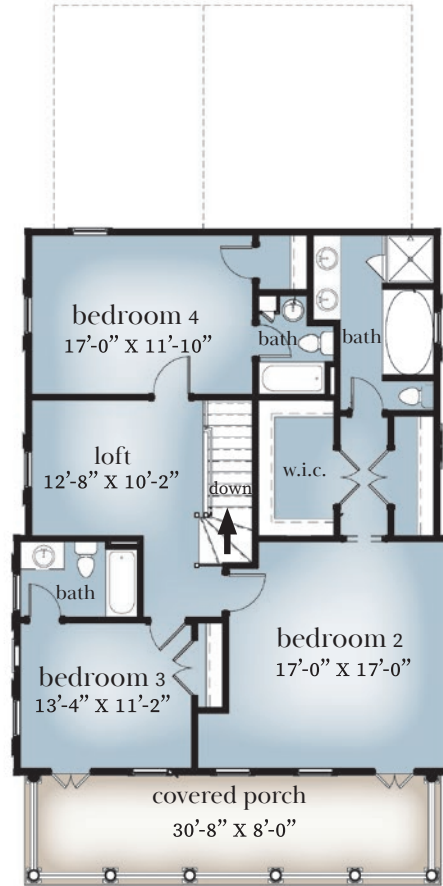
Elevation A



First Floor



Optional Owner's Bath



Second Floor



Optional Separate Baths

Artist's conceptual illustration. Subject to change.

For more information or a personal property tour, please contact us at info@BayCreekLife.com or 844.620.2900

BayCreekLife.com



11/08/22

BAY CREEK
Cape Charles, Virginia